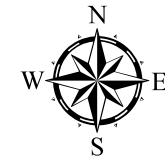


Map 1

Village of St. Cloud

Existing Land Use Map



Land Use Categories

- Farmsteads
- Residential
- Medium Density Residential
- Multi-Family Residential
- Commercial
- Industrial
- Utilities
- Public/Governmental/Institutional
- Parks and Recreation
- Open Land
- Agriculture
- Water Features
- Corporate Limits

Coverages

- Wetlands Overlay
- Wetlands < 2 acres

The wetlands digital data was created from the Wisconsin Wetland Inventory Maps by the DNR Bureau of Watershed Management, who is the custodian and sole distributor of this data. The DNR will not be liable in any way for the accuracy of the data and the fitness of use rests entirely upon the purchaser.

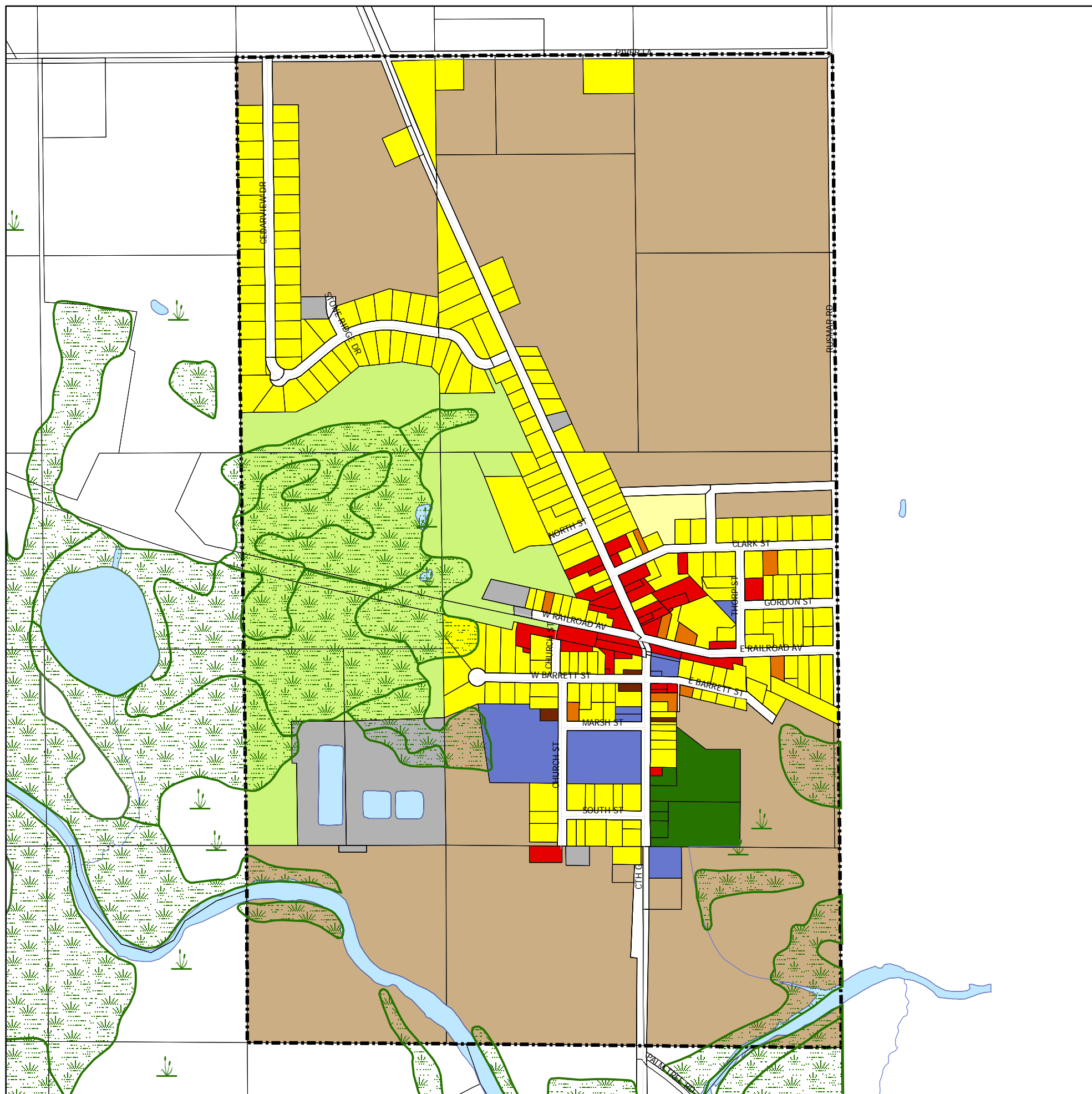
The base map was created with data from Fond du Lac County Planning Department, who assumes no liability for the accuracy of this data or any use or misuse of its content. Revisions were made by Martenson and Eisele, Inc. in 2008 under the direction of the Village of St. Cloud.

Martenson & Eisele, Inc.

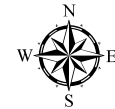


1377 Midway Road
Menasha, WI 54952
www.martenson-eisele.com
info@martenson-eisele.com
920.731.0381 1.800.236.0381

Planning
Environmental
Surveying
Engineering
Architecture



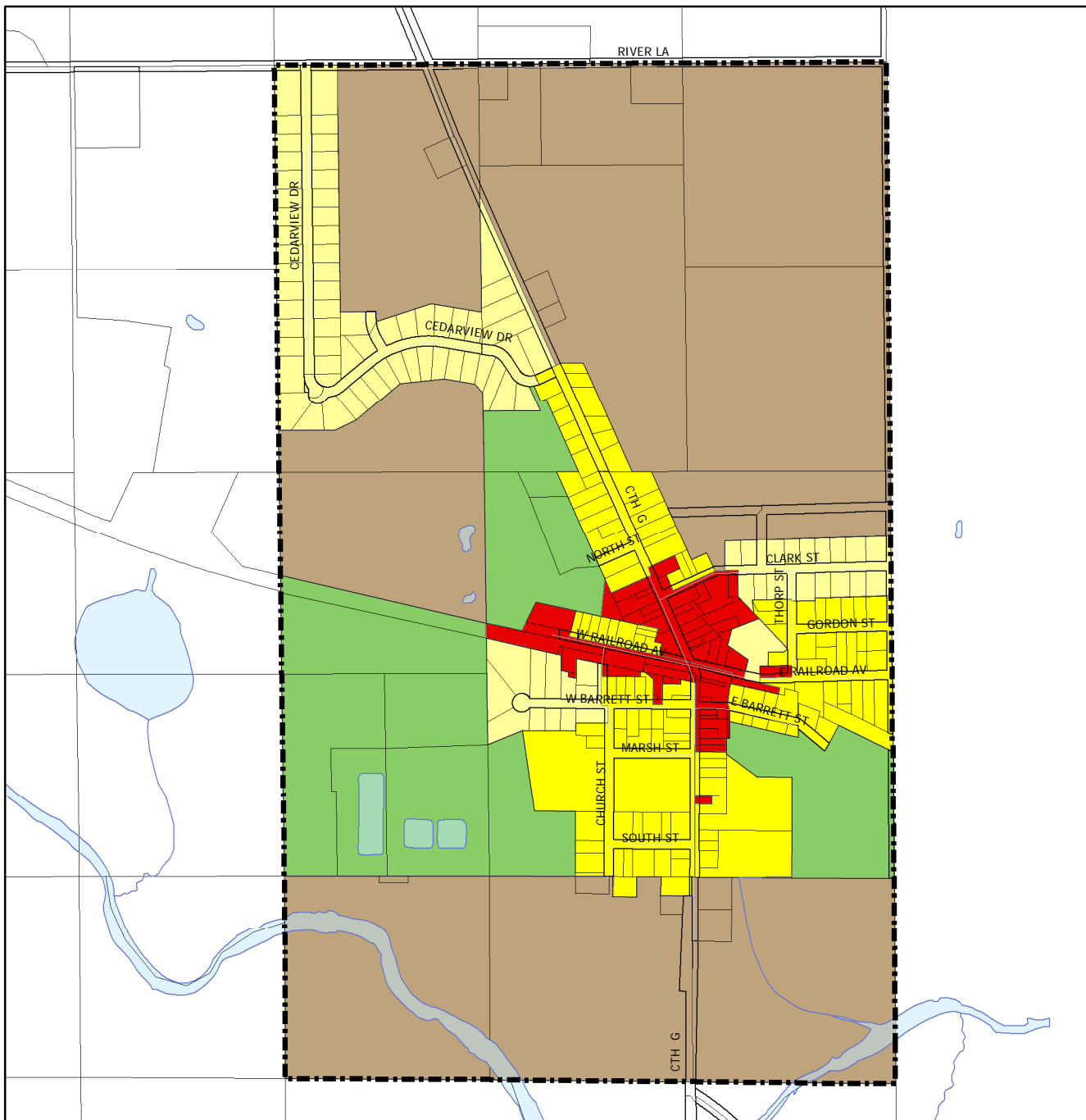
Map 2 Village of St. Cloud Zoning



Legend

Zoning Districts

- A-1 Exclusive Agriculture
- B-1 General Commercial
- I-1 General Industrial
- R-1 Single Family Residential
- R-2 Single Family Residential
- R-3 Multi-Family Residential
- RD Rural Development



The base map was created with data from Fond du Lac County Planning Department, who assumes no liability for the accuracy of this data or any use or misuse of its content. Revisions were made by Martenson and Eisele, Inc. in 2008 under the direction of the Village of St. Cloud.

Martenson & Eisele, Inc.

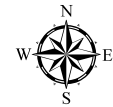


1377 Midway Road
Menasha, WI 54952
www.martenson-eisele.com
info@martenson-eisele.com
920.731.0381 1.800.236.0381

Planning
Environmental
Surveying
Engineering
Architecture

pnarcgis337910lu.mxd_07/07/2009

Map 3 Village of St. Cloud Topography



Legend

Elevation

- 910
- 911 - 920
- 921 - 930
- 931 - 940
- 941 - 950
- 951 - 960
- 961 - 970
- 971 - 980
- 981 - 990
- 991 - 1000
- 1001 - 1010
- 1011 - 1020
- 1021 - 1030
- 1031 - 1038

The base map was created with data from Fond du Lac County Planning Department, who assumes no liability for the accuracy of this data or any use or misuse of its content. Revisions were made by Martenson and Eisele, Inc. in 2008 under the direction of the Village of St. Cloud.

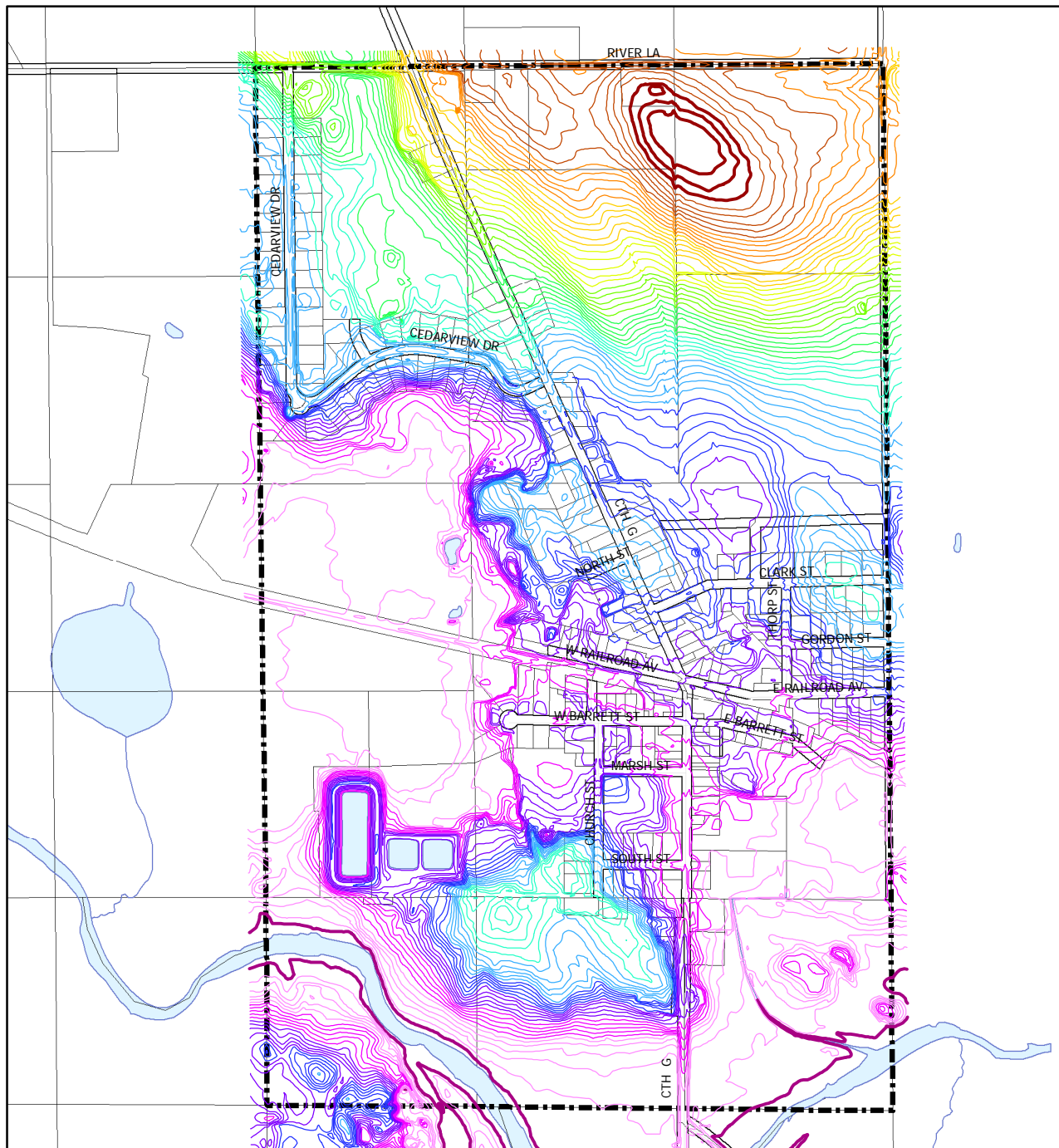
Martenson & Eisele, Inc.



1377 Midway Road
Menasha, WI 54952
www.martenson-eisele.com
info@martenson-eisele.com
920.731.0381 1.800.236.0381

Planning
Environmental
Surveying
Engineering
Architecture

pnarcgis337910lu.mxd_07/07/2009



Fond du Lac County

AQUATIC OCCURRENCES

Animal

Osprey, *Pandion haliaetus*, 2003
Ellipse, *Venustaconcha ellipsiformis*, 1977
Bullfrog, *Rana catesbeiana*, 2007
Common Tern, *Sterna hirundo*, 2000
Queen Snake, *Regina septemvittata*, 1985
Weed Shiner, *Notropis texanus*, 1973
Least Darter, *Etheostoma micropetca*, 1977
Lake Sturgeon, *Acipenser fulvescens*
Mulberry Wing, *Poanes massasoit*, 1992
Redfin Shiner, *Lythrurus umbratilis*, 1972
Slender Bluet, *Enallagma traviatum*, 1990
Western Grebe, *Aechmophorus occidentalis*, 1990
Pugnose Shiner, *Notropis anogenus*, 1979
Lake Chubsucker, *Erimyzon sucetta*, 1979
Longear Sunfish, *Lepomis megalotis*, 1978
Swamp Metalmark, *Calephelis muticum*, 2002
Banded Killifish, *Fundulus diaphanus*, 1979
Greater Redhorse, *Moxostoma valenciennesi*, 1996
Red-necked Grebe, *Podiceps grisegena*, 1986
Blanding's Turtle, *Emydoidea blandingii*, 2005
Little Glassy Wing, *Pompeius verna*, 1993
Butler's Gartersnake, *Thamnophis butleri*, 2004
Cantrall's Bog Beetle, *Liodesus cantralli*, 1985
Wisconsin Well Amphipod, *Stygobromus putealis*, 1994
Blanchard's Cricket Frog, *Acris crepitans blanchardi*, 1969
Black-crowned Night-heron, *Nycticorax nycticorax*, 1986

Plants

Cuckooflower, *Cardamine pratensis*, 2005
Swamp Bedstraw, *Galium brevipes*, 1986
Showy Lady's-slipper, *Cypripedium reginae*, 2004
Slim-stem Small-reedgrass, *Calamagrostis stricta*, 1938
Small White Lady's-slipper, *Cypripedium candidum*, 1873
Northern Yellow Lady's-slipper, *Cypripedium parviflorum* var. *makasin*, 1970

Natural Communities

Open Bog, Open bog, 1979
Shrub-carr, Shrub-carr, 2000
Spring Pond, Spring pond, 1998
Wet Prairie, Wet prairie, 1988
Calcareous Fen, Calcareous fen, 1976
Emergent Marsh, Emergent marsh, 2006
Lake-Soft Bog, Lake-soft bog, 1976
Floodplain Forest, Floodplain forest, 1978
Northern Wet Forest, Northern wet forest, 1979
Southern Sedge Meadow, Southern sedge meadow, 1979
Southern Hardwood Swamp, Southern hardwood swamp, 1979
Stream-Fast, Hard, Cold, Stream-fast, hard, cold, 1979
Stream-Fast, Soft, Cold, Stream-fast, soft, cold, 1978
Northern Wet-mesic Forest, Northern wet-mesic forest, 2000
Lake-Shallow, Hard, Seepage, Lake-shallow, hard, seepage, 1979
Lake-Shallow, Soft, Seepage, Lake-shallow, soft, seepage, 1978
Lake-Shallow, Hard, Drainage, Lake-shallow, hard, drainage, 1978

TERRESTRIAL OCCURRENCES

Animal

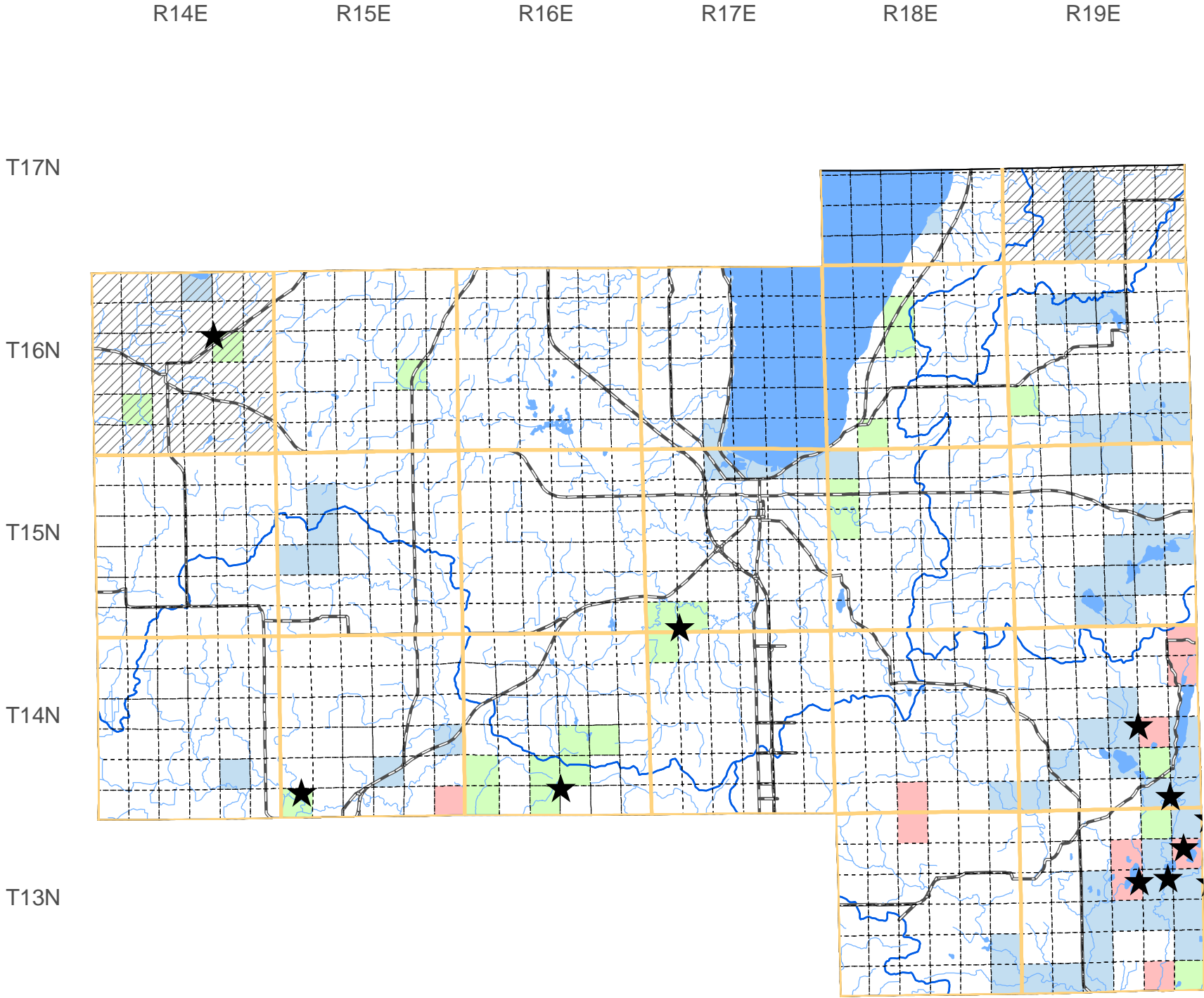
A Land Snail, *Catinella gelida*, 1997
Honey Vertigo, *Vertigo tridentata*, 1997
Thin-lip Vallonia, *Vallonia perspectiva*, 1997
Yellow-bellied Racer, *Coluber constrictor*, 1972
Northern Ringneck Snake, *Diadophis punctatus edwardsii*, 1993
Iowa Pleistocene Vertigo, *Vertigo* sp. 2, 1997
Midwest Pleistocene Vertigo, *Vertigo hubrichti*, 1997
Red-tailed Prairie Leafhopper, *Aftelia rubranura*, 1998

Plants

Forked Aster, *Aster furcatus*, 2001
Yellow Gentian, *Gentiana alba*, 1994
Woolly Milkweed, *Asclepias lanuginosa*, 1938
Prairie Milkweed, *Asclepias sullivantii*, 1987
American Gromwell, *Lithospermum latifolium*, 1965
Large-leaved Avens, *Geum macrophyllum* var. *macrophyllum*, 2004
Rock Whitlow-grass, *Draba arabisans*, 2000
Harbinger-of-spring, *Erigenia bulbosa*,

Natural Communities

Dry Prairie, Dry prairie, 1988
Moist Cliff, Moist cliff, 2000
Mesic Prairie, Mesic prairie, 1988
Southern Dry Forest, Southern dry forest, 1978
Southern Mesic Forest, Southern mesic forest, 1985
Southern Dry-mesic Forest, Southern dry-mesic forest, 1992



SPECIES and/or NATURAL COMMUNITY | Aquatic Terrestrial Both Township Occurrences Watershed Boundaries ★ State Natural Area



This map represents the known occurrences of rare species and natural communities that have been recorded in the Wisconsin Natural Heritage Inventory (NHI). Colored sections indicate the presence of one or more occurrences within that section. Hatched townships indicate one or more occurrences reported only at the township level. The date following the names above notes the most recent year the occurrence was recorded in the county.

Map generated using NHI data from: 10/11/2007
Copyright 2003, WDNR-Bureau of Endangered Resources
This map may not be reproduced without prior written permission.



Map 5 Village of St. Cloud Street Classification and Traffic Counts



Legend

Classifications

- Collector
- Local

Daily Traffic Counts

2003 Daily Traffic Counts

2000 Daily Traffic Counts

Daily Traffic Counts are made available from the WI Department of Transportation and can be found at the following website;
<http://www.dot.wisconsin.gov/travel/counts/>

The base map was created with data from Fond du Lac County Planning Department, who assumes no liability for the accuracy of this data or any use or misuse of its content. Revisions were made by Martenson and Eisele, Inc. in 2008 under the direction of the Village of St. Cloud.

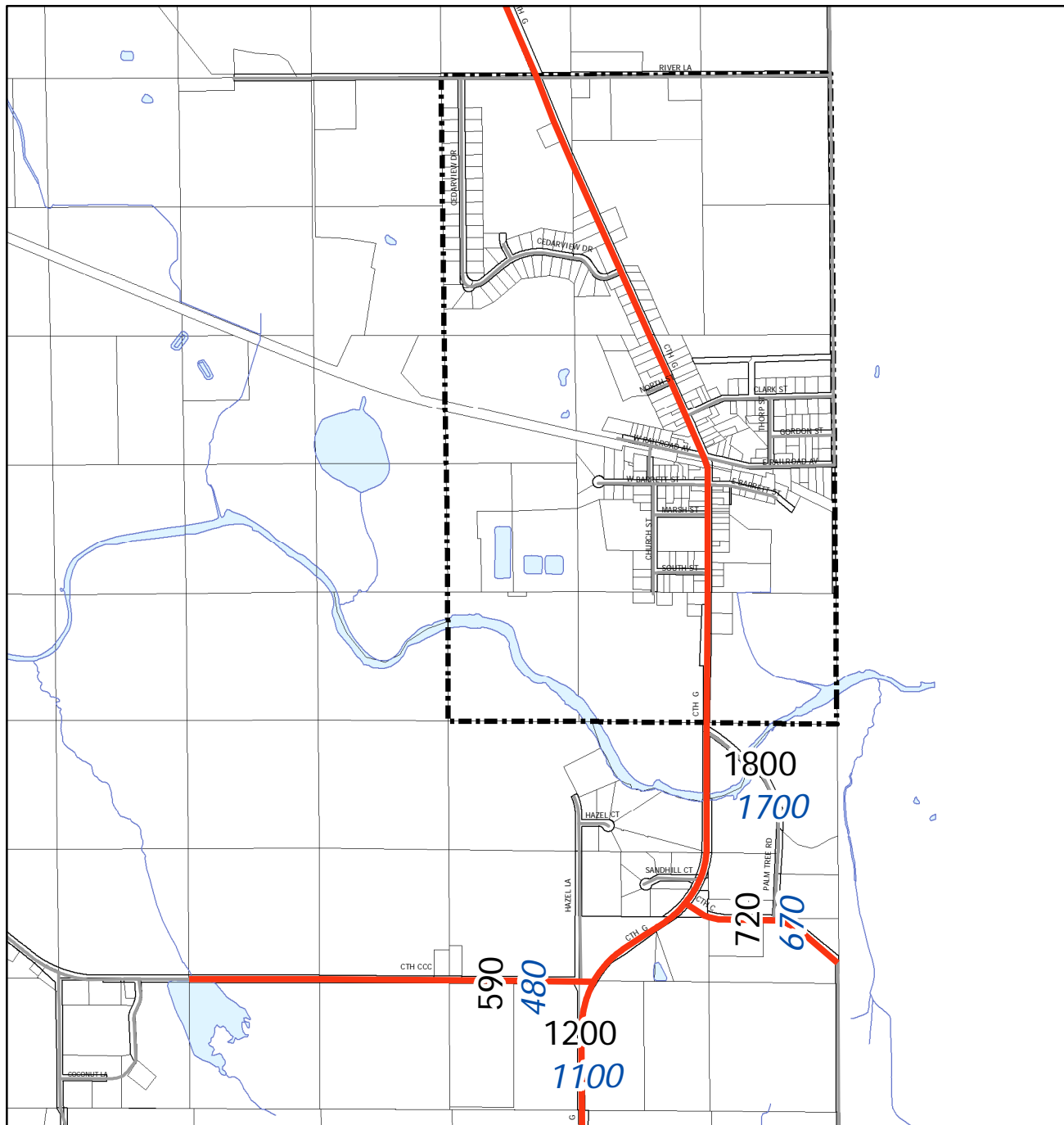
Martenson & Eisele, Inc.



1377 Midway Road
Menasha, WI 54952
www.martenson-eisele.com
info@martenson-eisele.com
920.731.0381 1.800.236.0381

Planning
Environmental
Surveying
Engineering
Architecture

pnarcgis337910lu.mxd_07/07/2009



Map 6

Village of St. Cloud

Utilities and Community Facilities



Legend

Utilities

1. Well No. 3
2. Well No. 1
3. Recycling Center
4. Sewage Treatment Plant
5. Well No. 2 and Water Tower

Public/Government

6. St. Cloud Civic Center
7. St. Cloud Catholic Church
8. St. Claudius Congregation Cemetery
9. Village Hall/Fire Department
10. Village Garage

Parks and Recreation

11. St. Cloud Village Park

The base map was created with data from Fond du Lac County Planning Department, who assumes no liability for the accuracy of this data or any use or misuse of its content. Revisions were made by Martenson and Eisele, Inc. in 2008 under the direction of the Village of St. Cloud.

Martenson & Eisele, Inc.



1377 Midway Road
Menasha, WI 54952
www.martenson-eisele.com
info@martenson-eisele.com
920.731.0381 1.800.236.0381

Planning
Environmental
Surveying
Engineering
Architecture

pnarcgis337910lu.mxd_07/07/2009

